



fitted with

work equipment
connected load
power consumption
luminous flux
luminous efficacy
light colour
color rendering index (CRI)
system of protection
class of protection
technology
usage
luminaire body

lamp cover
weight (net)
mains lead

design
fastening
dimension
special features

LED

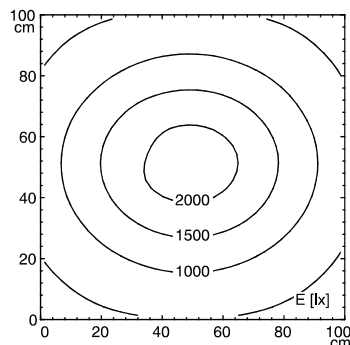
Energy efficiency category A+
electronic transformer
100-240 V; 50/60 Hz
approx. 34 W
approx. 1800 lm
approx. 53 lm/W
neutral white, approx. 4000 K
> 80
IP 20
II
continuously dimmable
push button
sectional aluminium, anodised, aluminium coloured
anodised
polycarbonate, white opal
approx. 1.8 kg
approx. 5 m; mains plug
US-ConnectionStandard
mounted version
screw-down bracket; horizontal
658
fixed connection, Ra (luminaire) ca. 90



CEE 7/XVI

illuminance

distance: 50 cm
Em: 1082 lx
Emax: 2219 lx
Emin: 348 lx



luminous intensity

